



PERKINSON
HOMES

Online Access For Clients

Track decisions

Review budgets

See where to go

06 - Exterior Doors Back to top

Garage Doors - Manufacturer, Product, Style and Color ✔️🔒


Requested By: Drywall (Est. 8/24/10)


See CHI Doors (www.chiold.com) or Clopay Doors (www.clopaydoor.com) for ideas.

Choice	Price
#1 Clopay Coachman CF23 Sandtone per drawings	\$4,669.77
#2 Clopay Coachman CF23 Sandtone with arched glass	\$5,124.32

Allowance \$4,000.00
 Difference **+\$1,124.32**

Assigned to [Change Order #1](#) - Awaiting Approval


CF23Design.jpg
Donny Wyatt on 5/27/10 1:04 PM


CF23OnHouse.jpg
Donny Wyatt on 5/27/10 1:04 PM

Last Comment

Assigned to Change Order #1. See change log for details.

Automatically entered
10:17 AM on Thursday, 1/14/10

[View/add comments](#) | [View change log](#)

12 - Plumbing Fixtures
UPCOMING
Back to top

Plumbing Fixtures 🔒 [Update item](#)

Requested By: Framing (Est. 4/28/10)

Ferguson is our preferred vendor (ask for Jane), but we can work with other local showrooms.

Choice	Price
#1 Quote #7726 from Ferguson	\$15,754.78
#2 Quote #7801 from Ferguson	\$12,801.00

Allowance \$9,500.00

Last Comment

Thanks. I'll post it when I get it.

Donny Wyatt
8:48 AM on Saturday, 1/23/10

[View/add comments](#) | [View change log](#)

View important files

Prioritize with reminders

FINANCIALS

Base Price		\$606,152.00			
Approval Documents (3)		\$13,899.43			
Change order #1 Status: Approved View Document Other Actions		\$15,308.33			
Change Order #2 Status: Approved View Document Other Actions		-\$1,977.00			
Category	Selection	Choice	Price	Allowance	Difference
33 - Design Center Selections	Hardwood credit	Changed from 3,4,5 wide plank to 2- 1/4" (note: includes builder's fees)	-\$1,977.00	\$0.00	-\$1,977.00
Subtotal					-\$1,977.00
Note: includes Builder's fees					+\$0.00
Change Order #2 Total					-\$1,977.00
Change Order #3 Status: Approved View Document Other Actions		\$568.10			
Locked Selection Items (105)		\$0.00			
Total Price		\$620,051.43			

Follow changes

Approve online

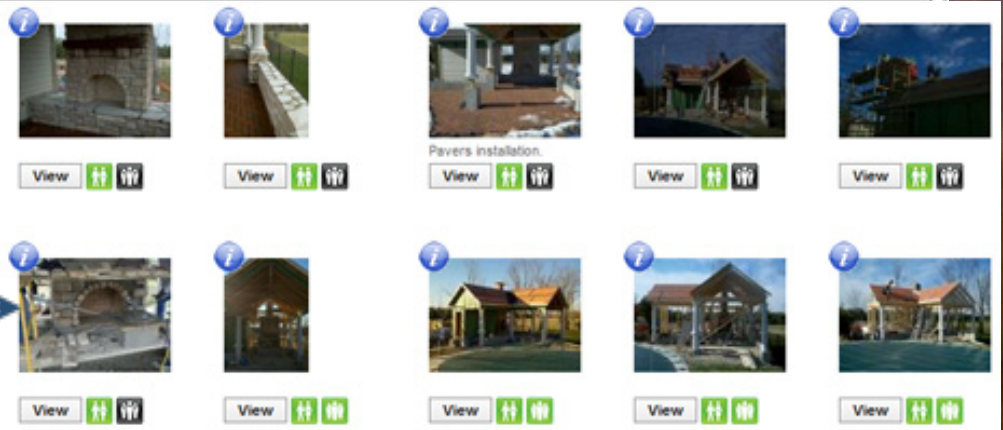
Always know your bottom line

PROGRESS

See what's next

◀ March 2010 ▶
March 2010 ▼




Mon	Tue	Wed	Thu	Fri
01 Mar	2	3	4	5
#6-Install slab plumbing (100%)				#7-Pour basement slab (100%) ▶
8	9	10	11	12
#7-Pour basement slab (100%) ▶		#8-Framing (0%) ▶		
15	16	17	18	19
#8-Framing (0%) ▶				
22	23	24	25	26
#8-Framing (0%) ▶				
29	30			
#8-Framing (0%) ▶				



Watch progress
from anywhere

COMMUNICATION

[+ Ask a question](#)

Question	Answer	Last Comment
 <p>1. Will the basement use cinderblock or poured concrete? Jane Maples 3/1/12 at 9:34 AM</p> <p>UPDATED</p>	 <p>We will be using poured walls. Donny Wyatt 3/1/12 at 3:48 PM</p>	 <p>Question answered. - 3/1/12 at 3:48 PM View/add comments</p> <p>There is 1 other new comment/update.</p>



Quick access to your questions & answers

Access all notes by topic

Receive updates & reply via email

Comments

Selection Item: Rough-In - Basement Bath

Clients	Builders	Partners
 <p>Type your comment here. Check Spelling <input type="button" value="Post Comment"/> </p>		Participating Partners: City Plumbing
	 <p>Can you guys meet on Tuesday at 4 to mark locations at the site? Donny Wyatt 3/1/12 at 10:08 AM</p>	
	 <p>Yes. That's possible. Let me check on some pricing and I'll get back to you mid-next week. Donny Wyatt 3/1/12 at 10:02 AM</p>	
 <p>We're interested in maybe doing a half bath rough-in. Is that possible? If so, what would it cost? Jane Maples 3/1/12 at 9:58 AM</p>		



PERKINSON
HOMES

Online Access For Clients